



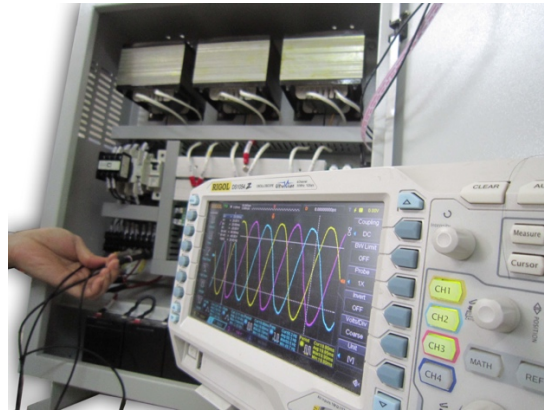
ARD FOR ELEVATOR



Model	SOJI10	SOJI15	SOJI25
Using for traction machine	5.5kW	7.5-9kW	11-16kW
Input			
AC Voltage	380VAC 3-phase $\pm 10\%$, 50/60Hz		
DC Voltage	60VDC (5x12V7AH)	60VDC(5x12V9AH)	60VDC(5x12V12AH)
Output			
Output Voltage	380VAC 3-Phase $\pm 5\%$, 50/60Hz		
Inverter Efficiency	85%		
Overload	105% continuous		
Power factor	0.7		
Battery			
Battery type	Lead acid maintenance free battery		
Charger type	Smart charging build-in 3 stages		
Protections	Output Overload & Short circuit Battery low & Over Voltage		
Dimension (WxDxH)	510 x 655 x 190 mm		

Highlight features:

- Pure sine wave output
- Easy for installation
- Microprocessor-based digital control
- Auto restart while AC is recovering



- Intelligent battery management with build-in 3 stage battery charger to maximize battery life
- High efficiency, optimum performance, low maintenance, easy to operate
- Short circuit and overload protection
- Suitable for all kinds of elevators

Block diagram:

